

ACCESS FRAMES

[Regular and Safe-Hatch™ Simplex Access Frame Sizing Chart](#)

[Double Door Safe-Hatch Sizing Chart](#)

[Regular Aluminium Access Frame](#)

[Aluminium/Steel \(Safe-Hatch\) Access Frame](#)

[Odour Resistant Aluminium Access Frame](#)

[Galvanized Steel Access Frame](#)

[Steel Access Frame](#)

[Aluminium/Steel Double Door \(Safe-Hatch\) Access Frame](#)

[Right & Left Companion \(Safe-Hatch\)](#)

[Traffic Bearing Access Frame](#)

[Aluminium/Steel Operator \(Safe-Hatch\) Access Frame](#)

[Regular Aluminium Access Frame for Vertical Level Regulator Hanger](#)

[Odour Resistant Aluminium Access Frame for Vertical Level Regulator Hanger](#)

[Standard Duplex Arrangement](#)

[Kit to Transform Regular Aluminium Access Frame to an Odour Resistant Access Frame](#)

[Kit to Adapt Regular Aluminium Access Frame & Odour Resistant to Safe-Hatch](#)

[Piston Kit](#)

All entries are clickable



Station Equipment

DOCUMENT NO.

ES 12.1.1

Regular & Safe-Hatch Simplex Access Frames Sizing Chart for Pumps 3067 to 3171

SUPERSEDES

ISSUED

11/2007

12/2012

PUMP MODEL	VOLUTE OUTLET	DISCHARGE CONNECTION	ACCESS FRAME REQUIRED FOR INSTALLATIONS			
			WITHOUT HYDRAULIC MIX FLUSH VALVE		WITH HYDRAULIC MIX FLUSH VALVE	
			REGULAR	SAFE-HATCH	REGULAR	SAFE-HATCH
C 3067 HT D 3067 MT	2" 2"	2" 2 1/2"	13-43 00 40 13-43 00 40	13-43 00 80 13-43 00 80	N/A N/A	N/A N/A
3085 SH 3085 HT 3085 MT 3085 LT	3" 3" 3" 4"	3",4" 3",4" 3",4" 4"	13-43 00 40 13-43 00 40 13-43 00 40 13-43 00 40	13-43 00 80 13-43 00 80 13-43 00 80 13-43 00 80	13-43 00 41 13-43 00 40 13-43 00 40 13-43 00 40	13-43 00 81 13-43 00 80 13-43 00 80 13-43 00 80
C 3102 SH C 3102 HT C 3102 MT C 3102 LT C 3102 LT	3" 3" 4" 4" 6"	3",4" 3",4" 4" 4" 6",8"	13-43 00 40 13-43 00 40 13-43 00 40 13-43 00 40 13-43 00 40	13-43 00 80 13-43 00 80 13-43 00 80 13-43 00 80 13-43 00 80	13-43 00 41 13-43 00 40 13-43 00 40 13-43 00 41 13-43 00 41	13-43 00 81 13-43 00 80 13-43 00 80 13-43 00 81 13-43 00 81
C 3127 HT C 3127 HT C 3127 MT C 3127 MT C 3127 LT D 3127	3" 4" 4" 6" 6" 4"	3",4" 4",6" 4",6" 6",8" 6",8" 4"	13-43 00 40 13-43 00 40 13-43 00 40 13-43 00 40 13-43 00 40 13-43 00 41	13-43 00 80 13-43 00 80 13-43 00 80 13-43 00 80 13-43 00 80 13-43 00 81	13-43 00 40 13-43 00 41 13-43 00 41 13-43 00 41 13-43 00 41 13-43 00 41	13-43 00 80 13-43 00 81 13-43 00 81 13-43 00 81 13-43 00 81 13-43 00 81
C 3140 HT C 3140 MT C 3140 LT D 3140	4" 6" 8" 4"	4" 6" 8",10" 4"	13-43 00 41 13-43 00 41 13-43 00 43 13-43 00 41	13-43 00 81 13-43 00 81 13-43 00 83 13-43 00 81	13-43 00 41 13-43 00 42 13-43 00 43 13-43 00 41	13-43 00 81 13-43 00 82 13-43 00 83 13-43 00 81
C 3152 HT C 3152 HT C 3152 MT C 3152 LT D 3152	4" 6" 6" 10" 4"	4",6" 6",8" 6",8" 10",12" 4"	13-43 00 41 13-43 00 41 13-43 00 41 13-43 00 43 13-43 00 41	13-43 00 81 13-43 00 81 13-43 00 81 13-43 00 83 13-43 00 81	13-43 00 41 13-43 00 41 13-43 00 42 13-43 00 43 13-43 00 41	13-43 00 81 13-43 00 81 13-43 00 82 13-43 00 83 13-43 00 81
N 3153 SH N 3153 SH N 3153 HT N 3153 MT N 3153 LT N 3153 LT	— — 4" — 8" 10"	3" 4" 4" 6" 8" 10"	13-43 00 41 13-43 00 41 13-43 00 41 13-43 00 41 13-43 00 43 13-43 00 43	13-43 00 81 13-43 00 81 13-43 00 81 13-43 00 81 13-43 00 83 13-43 00 83	13-43 00 41 13-43 00 41 13-43 00 41 13-43 00 42 13-43 00 43 13-43 00 43	13-43 00 81 13-43 00 81 13-43 00 81 13-43 00 82 13-43 00 83 13-43 00 83
C 3170 HT C 3170 MT C 3170 LT	4" 6" 10"	4",6" 6",8" 10",12"	13-43 00 43 13-43 00 43 13-43 00 43	13-43 00 83 13-43 00 83 13-43 00 83	13-43 00 43 13-43 00 43 13-43 00 43	13-43 00 83 13-43 00 83 13-43 00 83
N 3171 SH N 3171 HT N 3171 MT N 3171 LT	— — 6" —	4" 4" 6" 10"	13-43 00 43 13-43 00 43 13-43 00 43 13-43 00 43	13-43 00 83 13-43 00 83 13-43 00 83 13-43 00 83	13-43 00 43 13-43 00 43 13-43 00 43 13-43 00 43	13-43 00 83 13-43 00 83 13-43 00 83 13-43 00 83

NOTE:

FOR SIMPLEX INSTALLATIONS ONLY.
FOR DUPLEX INSTALLATIONS PLEASE CHECK
WITH YOUR FLYGT REPRESENTATIVE.



Station Equipment

DOCUMENT NO.

ES 12.1.2

Regular & Safe-Hatch Simplex Access Frames Sizing Chart for Pumps 3201 to 3301

SUPERSEDES

ISSUED

11/2007

12/2012

PUMP MODEL	VOLUTE OUTLET	DISCHARGE CONNECTION	ACCESS FRAME REQUIRED FOR INSTALLATIONS			
			WITHOUT HYDRAULIC MIX FLUSH VALVE		WITH HYDRAULIC MIX FLUSH VALVE	
			REGULAR	SAFE-HATCH	REGULAR	SAFE-HATCH
C 3201 HT	6"	6",8"	13-43 00 43	13-43 00 83	13-43 00 43	13-43 00 83
C 3201 MT	8"	8",10"	13-43 00 43	13-43 00 83	13-43 00 43	13-43 00 83
C 3201 LT	12"	12",14"	13-43 00 43	13-43 00 83	13-43 00 43	13-43 00 83
N 3202 HT	—	4"	13-43 00 43	13-43 00 83	13-43 00 43	13-43 00 83
N 3202 HT	6"	6"	13-43 00 43	13-43 00 83	13-43 00 43	13-43 00 83
N 3202 MT	—	8"	13-43 00 43	13-43 00 83	13-43 00 43	13-43 00 83
N 3202 MT	—	10"	13-43 00 43	13-43 00 83	13-43 00 43	13-43 00 83
N 3202 LT	12"	12"	SEE NOTE 2	SEE NOTE 2	SEE NOTE 3	SEE NOTE 3
C 3300 HT	6"	8"	13-43 00 43	13-43 00 83	13-43 00 43	13-43 00 83
C 3300 MT	10"	10",12"	13-43 00 43	13-43 00 83	13-43 00 43	13-43 00 83
C 3300 LT	12"	12",14"	13-43 00 43	13-43 00 83	13-43 00 43	13-43 00 83
R 3300	6"	8"	13-43 00 43	13-43 00 83	13-43 00 43	13-43 00 83
N 3301 HT	—	6"	13-43 00 43	13-43 00 83	13-43 00 43	13-43 00 83
N 3301 MT	—	10"	13-43 00 43	13-43 00 83	13-43 00 43	13-43 00 83
N 3301 LT	—	12"	SEE NOTE 2	SEE NOTE 2	SEE NOTE 3	SEE NOTE 3
N 3301 LT	—	14"	SEE NOTE 4	SEE NOTE 4	SEE NOTE 4	SEE NOTE 4

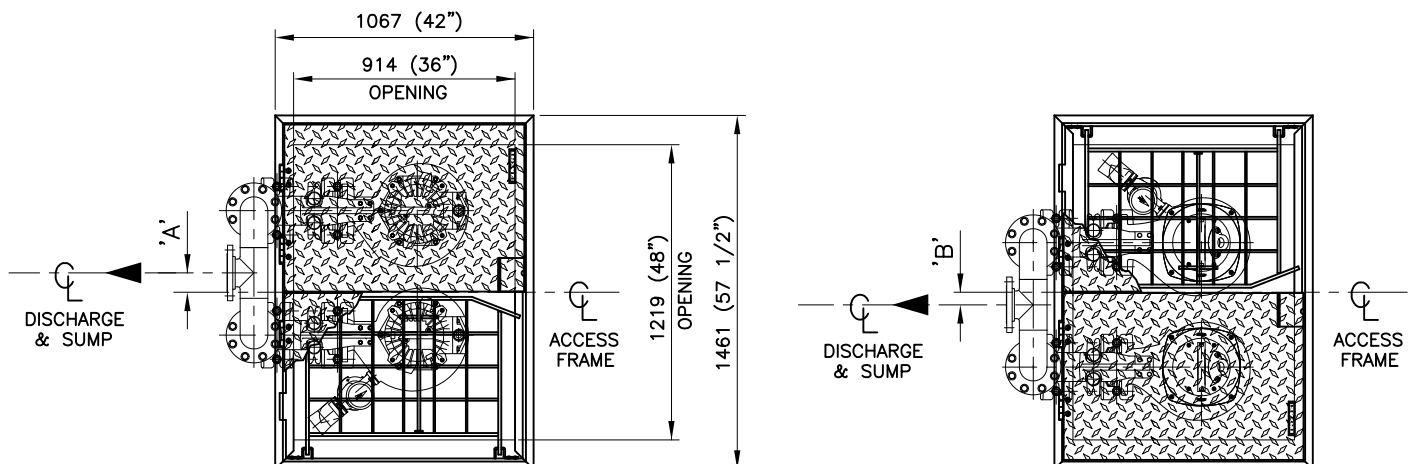
NOTES:

- 1 - FOR SIMPLEX INSTALLATIONS ONLY.
FOR DUPLEX INSTALLATIONS PLEASE CHECK
WITH YOUR FLYGT REPRESENTATIVE.
- 2 - PUMP TOO LONG, TOO CLOSE TO THE LOCKING TAB.
- 3 - PUMP TOO LONG, TOO CLOSE TO THE LOCKING TAB,
PLUS THE ACCESS FRAME IS NOT WIDE ENOUGH WITH
THE MIX FLUSH VALVE.
- 4 - PUMP TOO WIDE AND TOO LONG.

PUMP MODEL	DISCHARGE CONNECTION	DOUBLE DOOR ACCESS FRAME REQUIRED FOR INSTALLATIONS WITHOUT T.O.P. LINER		OFFSET DOUBLE DOOR ACCESS FRAMES IN RELATION TO PUMPS C/W M.F.V.	"A"	"B"	NOTE
		WITHOUT HYDRAULIC MIX FLUSH VALVE	WITH HYDRAULIC MIX FLUSH VALVE				
CP 3085 HT	3"	13-43 00 90	13-43 00 90	NO	—	—	—
NP/CP 3085 MT	3"	13-43 00 90	13-43 00 90	NO	—	—	—
NP/CP 3085 MT	4"	13-43 00 90	13-43 00 90	YES	25 (1")	—	—
CP 3085 LT	4"	13-43 00 90	13-43 00 90	YES	25 (1")	—	1
CP 3085 LT	4"	13-43 00 90	13-43 00 90	NO	—	—	2
NP/CP 3102 SH/HT	3"	13-43 00 90	13-43 00 90	NO	—	—	—
NP/CP 3102 MT	4"	13-43 00 90	13-43 00 90	NO	—	—	—
NP/CP 3102 LT	4"	13-43 00 90	13-43 00 90	NO	—	—	—
NP/CP 3102 LT	6"	13-43 00 90	—	NO	—	—	—
CP 3127 SH/HT	3"	13-43 00 90	13-43 00 90	YES	25 (1")	—	—
NP 3127 HT	4"	13-43 00 90	13-43 00 90	YES	50 (2")	—	3
CP 3127 HT	4"	13-43 00 90	13-43 00 90	NO	25 (1")	—	—
CP 3127 HT	4"	13-43 00 90	13-43 00 90	NO	—	—	4
CP 3127 HT	4"	13-43 00 90	13-43 00 90	YES	50 (2")	—	5
NP 3127 MT	4"	13-43 00 90	13-43 00 90	NO	—	—	—
CP 3127 MT	4"	13-43 00 90	13-43 00 90	NO	—	—	—
CP 3152 SH/HT	4"	13-43 00 90	—	NO	—	—	—
NP 3153 SH	3"	13-43 00 90	13-43 00 90	YES	—	50 (2")	—
NP 3153 SH	4"	13-43 00 90	13-43 00 90	YES	—	50 (2")	—
NP 3153 HT	4"	13-43 00 90	13-43 00 90	YES	—	25 (1")	—
NP 3171 SH	4"	13-43 00 90	13-43 00 90	YES	—	75 (3")	—

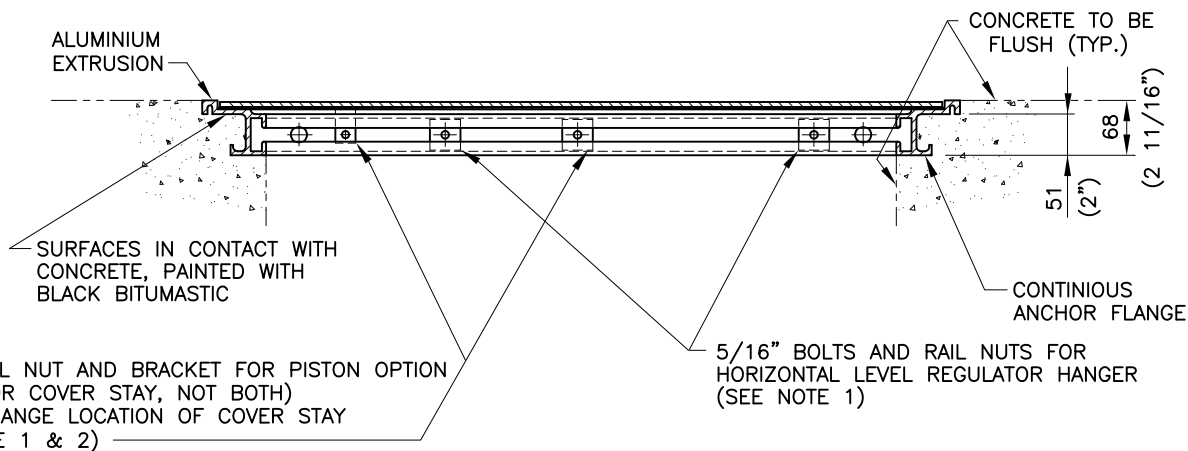
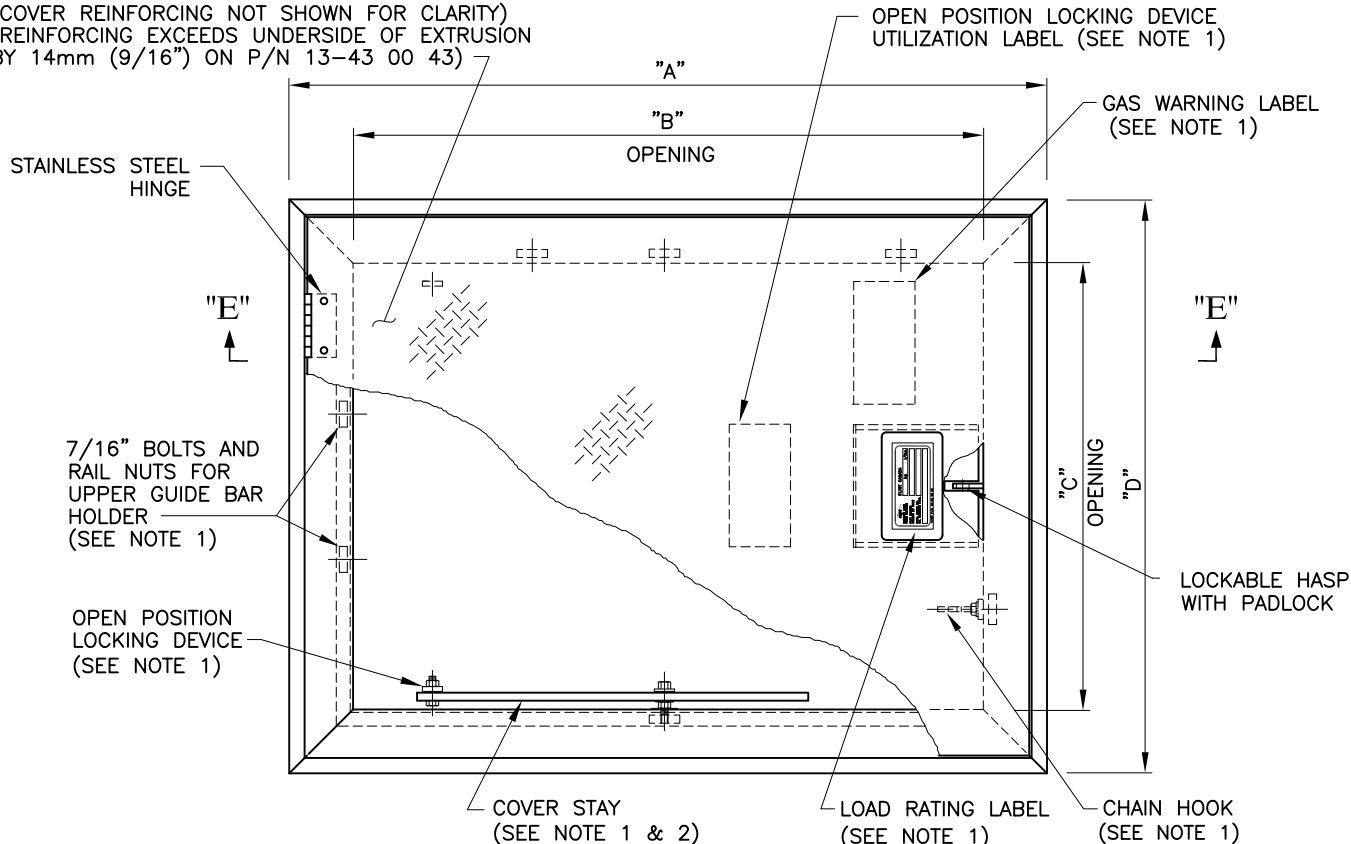
NOTES:

- 1 – EQUIPPED WITH IMPELLER 412, 414, 612 OR 614.
- 2 – EQUIPPED WITH IMPELLER 620 – 622.
- 3 – EQUIPPED WITH IMPELLER 486 – 489.
- 4 – EQUIPPED WITH IMPELLER 462 OR 463.
- 5 – EQUIPPED WITH IMPELLER 461, 467 OR 480–485.
- 6 – LAYOUT IS BASED ON THE INSTALLATION OF A STRAIGHT NOZZLE ON THE MIX FLUSH VALVE. OFFSETTING THE ACCESS FRAME MIGHT NOT BE REQUIRED IF A BENT NOZZLE IS USED.
- 7 – MATERIAL : ALUMINUM / STEEL



DIMENSIONS ARE IN mm

CHECKERED ALUMINIUM COVER PLATE
(COVER REINFORCING NOT SHOWN FOR CLARITY)
(REINFORCING EXCEEDS UNDERSIDE OF EXTRUSION
BY 14mm (9/16") ON P/N 13-43 00 43)

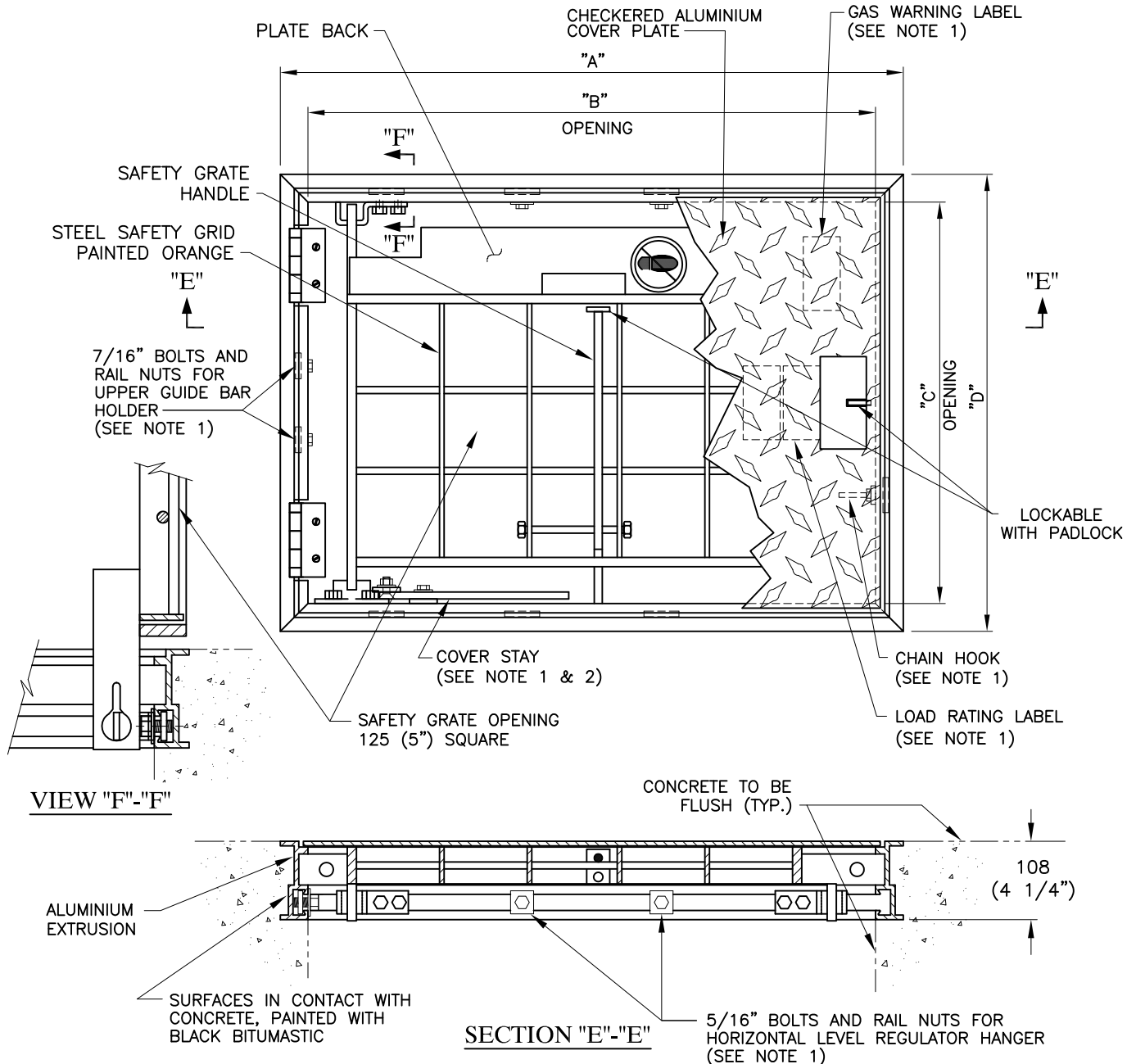


SECTION "E" - "E"

ACCESS FRAME	"A"	"B"	"C"	"D"	APPROX. WEIGHT	COVER LOAD LIMIT
13-43 00 40	939 (36 15/16")	781 (30 3/4")	553 (21 3/4")	711 (28")	47 kg (103 lb)	730 kg/m ² (150 lb/ft ²)
13-43 00 41	971 (38 1/4")	813 (32")	635 (25")	793 (31 1/4")	52 kg (115 lb)	730 kg/m ² (150 lb/ft ²)
13-43 00 42	971 (38 1/4")	813 (32")	880 (34 5/8")	1038 (40 7/8")	65 Kg. (143 Lbs.)	730 kg/m ² (150 lb/ft ²)
13-43 00 43	1479 (58 1/4")	1321 (52")	914 (36")	1072 (42 3/16")	99 kg (218 lb)	1100 Kg. (2420 lb) TOTAL

NOTES:

- 1 - INCLUDED WITH ACCESS FRAME.
- 2 - COVER STAY MAY BE INSTALLED ON THE OTHER SIDE ON SITE.



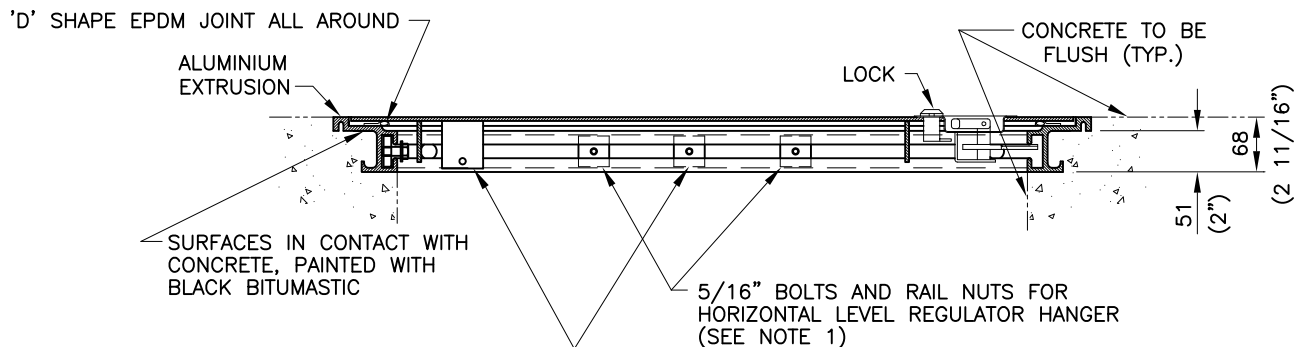
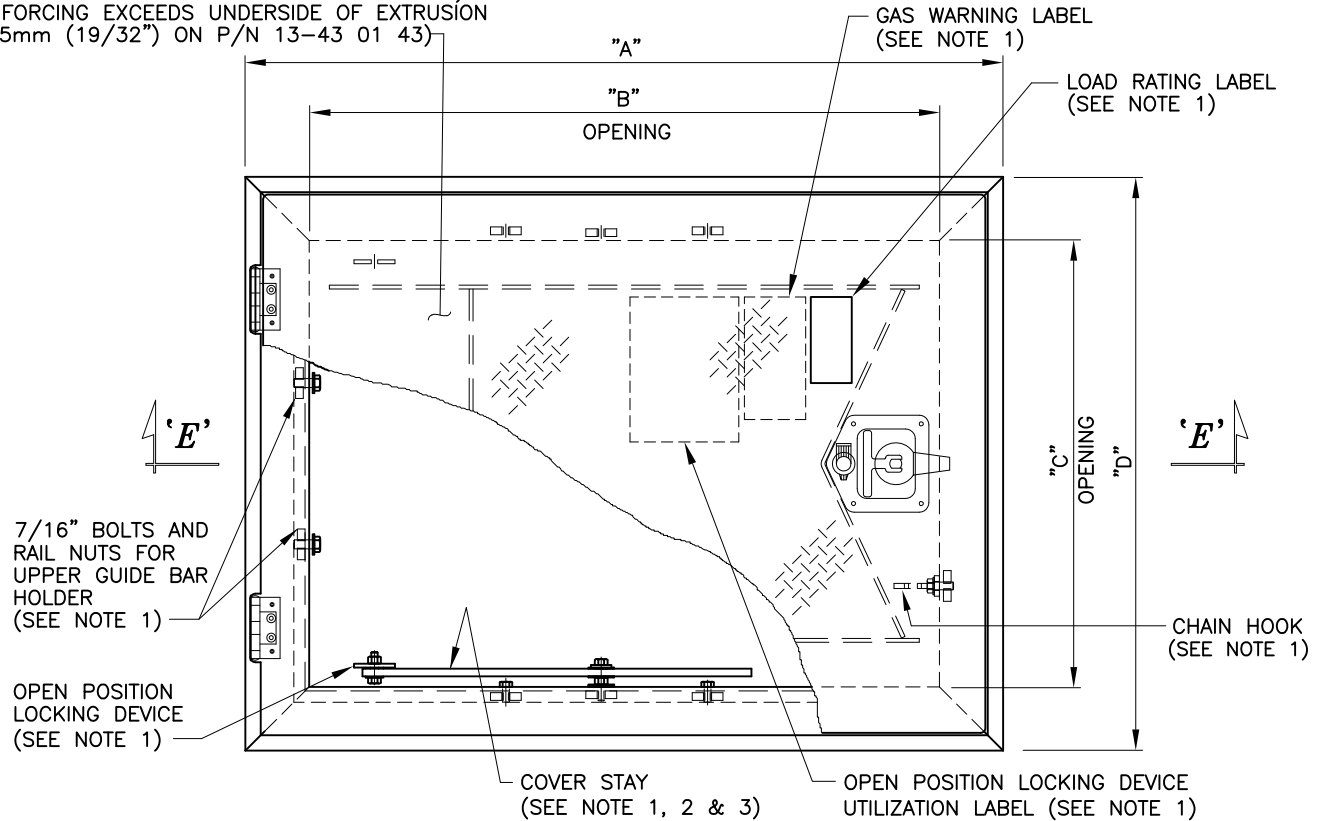
ACCESS FRAME	"A"	"B"	"C"	"D"	APPROX. WEIGHT	COVER LOAD LIMIT
13-43 00 80	857 (33 3/4")	781 (30 3/4")	553 (21 3/4")	629 (24 3/4")	25 kg. (55 lb.)	14.36 kPa (300 lb/ft ²)
13-43 00 81	889 (35")	813 (32")	635 (25")	711 (28")	32 kg. (70 lb.)	14.36 kPa (300 lb/ft ²)
13-43 00 82	889 (35")	813 (32")	880 (34 5/8")	956 (37 5/8")	39 kg. (85 lb.)	14.36 kPa (300 lb/ft ²)
13-43 00 83	1397 (55")	1321 (52")	914 (36")	991 (39")	57 kg. (125 lb.)	14.36 kPa (300 lb/ft ²)

NOTES :

- 1 - INCLUDED WITH ACCESS FRAME.
- 2 - COVER STAY MAY BE INSTALLED ON THE OTHER SIDE ON SITE.
- 3 - THE SAFETY GRATE MAY BE TURNED 180 DEGREES ON SITE.
(REQUIRES MOVING COVER STAY)

For Interior Use Only

CHECKERED ALUMINIUM COVER PLATE
(COVER REINFORCING NOT SHOWN FOR CLARITY)
(REINFORCING EXCEEDS UNDERSIDE OF EXTRUSION
BY 15mm (19/32") ON P/N 13-43 01 43)



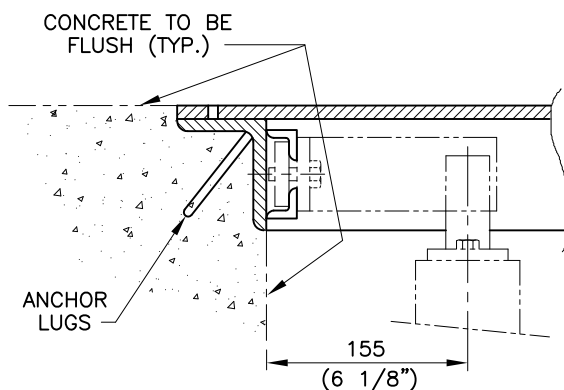
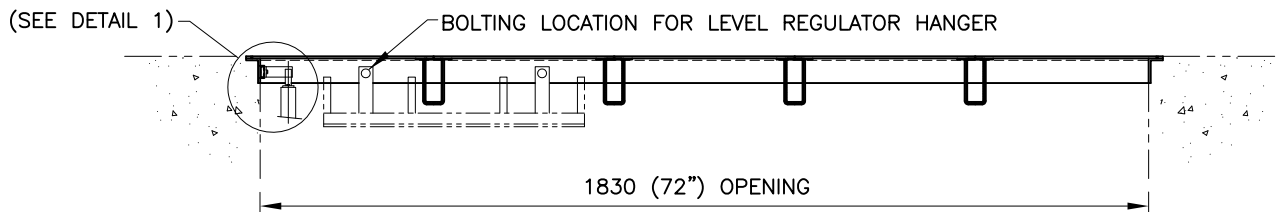
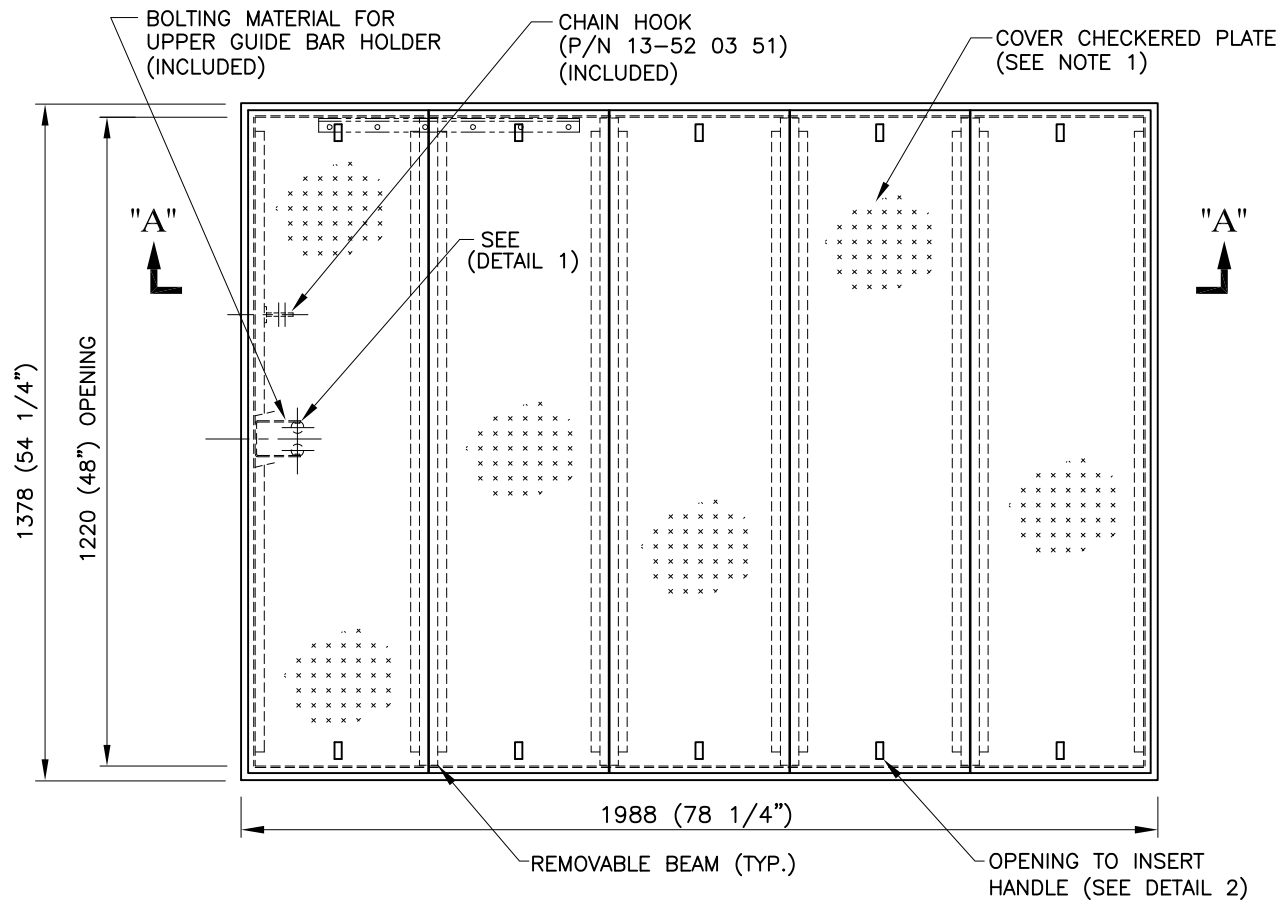
EXTRA RAIL NUT AND BRACKET FOR PISTON OPTION
(PISTON OR COVER STAY, NOT BOTH)
OR TO CHANGE LOCATION OF COVER STAY
(SEE NOTE 1 & 2)

SECTION "E" - "E"

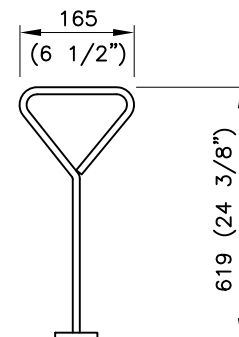
ACCESS FRAME	"A"	"B"	"C"	"D"	APPROX. WEIGHT	COVER LOAD LIMIT
13-43 01 40	939 (36 15/16")	781 (30 3/4")	553 (21 3/4")	711 (28")	20 kg (44 lb)	730 kg/m ² (150 lb/ft ²)
13-43 01 41	971 (38 1/4")	813 (32")	635 (25")	793 (31 1/4")	25 kg (55 lb)	730 kg/m ² (150 lb/ft ²)
13-43 01 42	971 (38 1/4")	813 (32")	880 (34 5/8")	1038 (40 7/8")	36 Kg. (79 Lbs.)	730 kg/m ² (150 lb/ft ²)
13-43 01 43	1479 (58 1/4")	1321 (52")	914 (36")	1072 (42 3/16")	50 kg (110 lb)	1100 Kg. (2420 lb) TOTAL

NOTES:

- 1 - INCLUDED WITH ACCESS FRAME.
- 2 - COVER STAY MAY BE INSTALLED ON THE OTHER SIDE ON SITE.
- 3 - TWO (2) COVER STAYS INSTALLED ON 13-43 01 43.
- 4 - EACH FRAME IS TESTED AND TIGHT AT AN INTERNAL PRESSURE OF 0.5 lb.



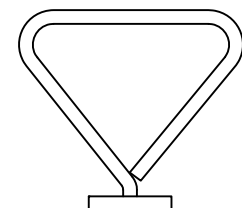
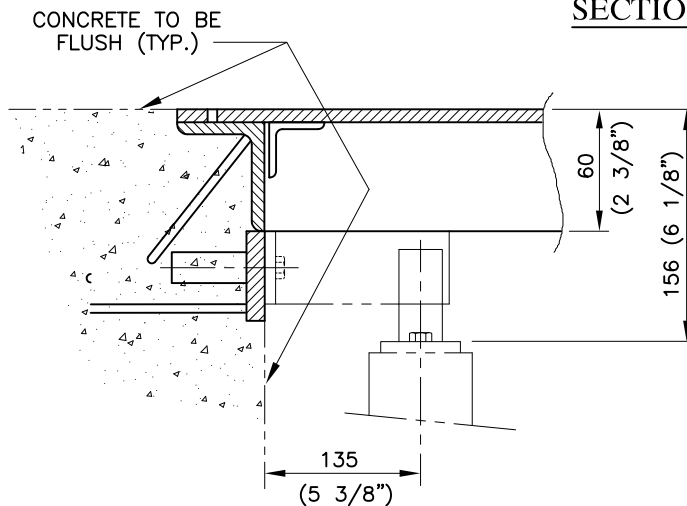
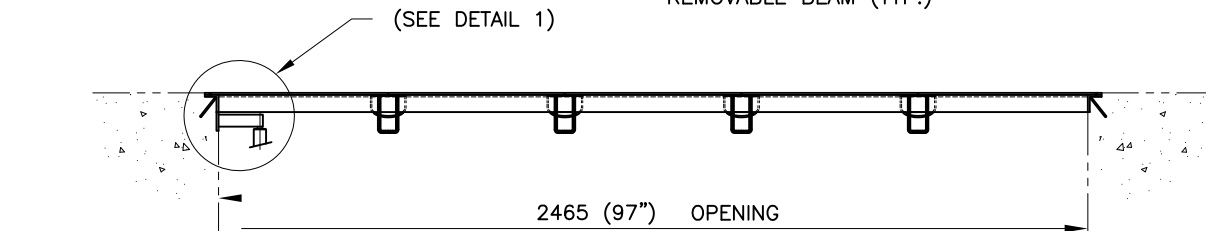
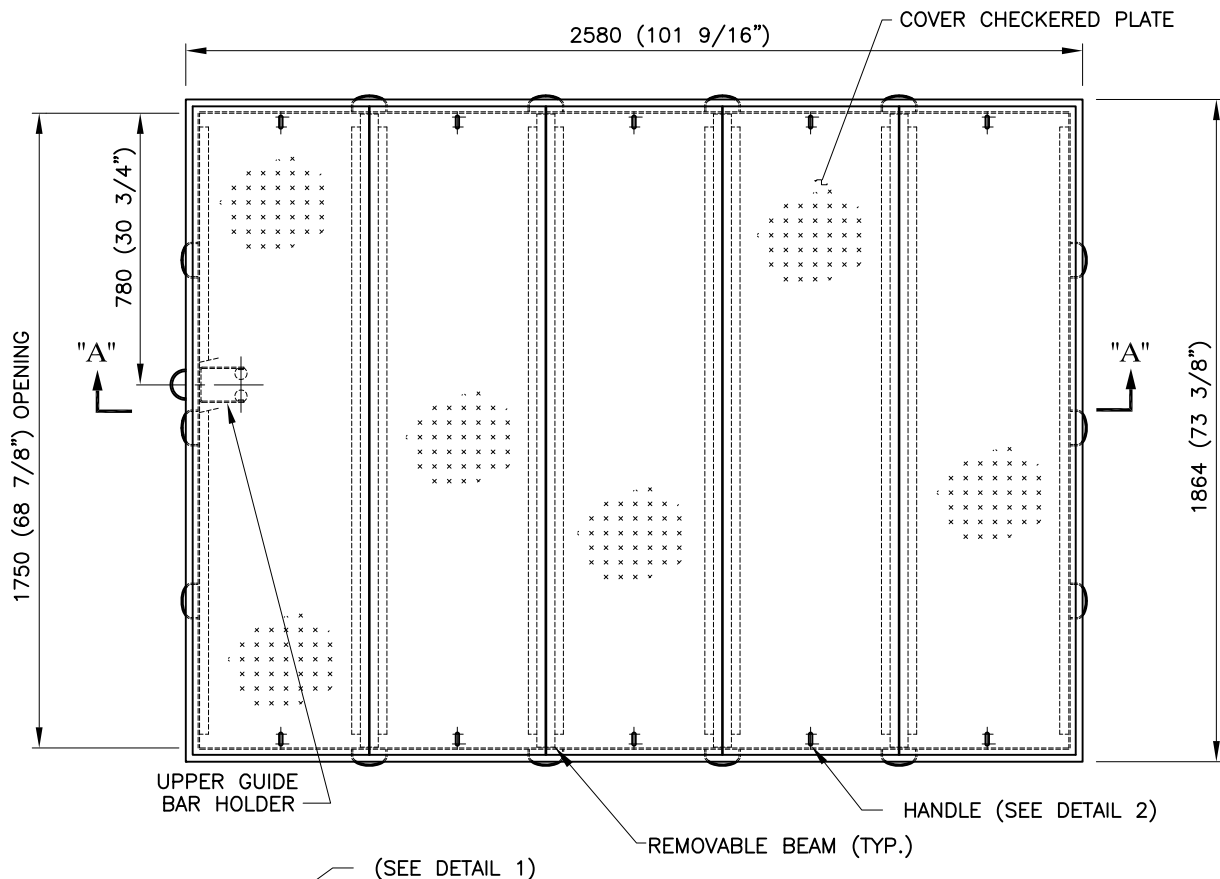
DETAIL 1



DETAIL 2
(TWO HANDLES SUPPLIED)

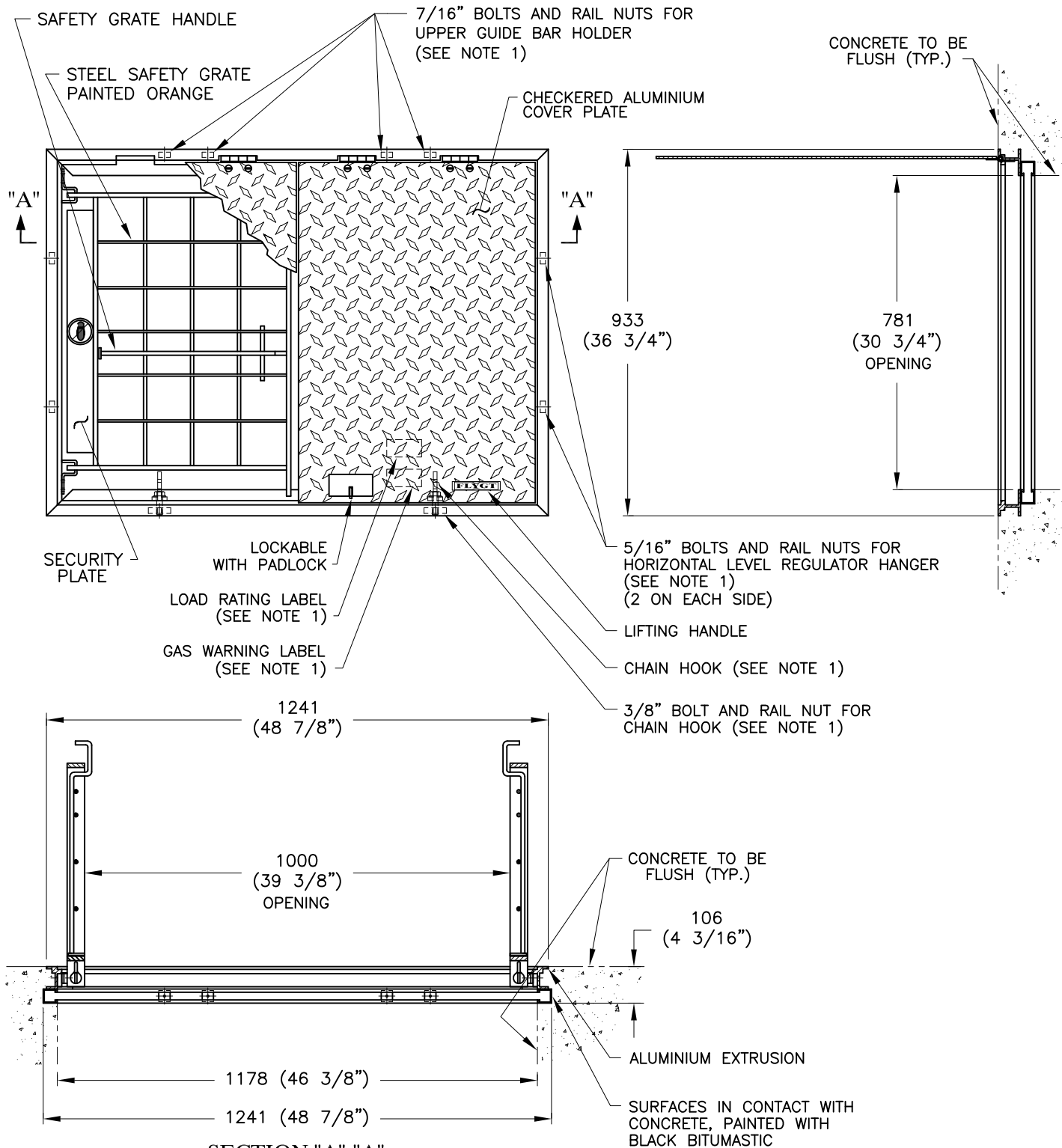
NOTES :

- 1 - EACH DOOR IS HELD ON THE FRAME BY A 1m LONG CHAIN.
- 2 - THE FRAME MUST NOT BE INSTALLED IN A DUPLEX MODE.
- 3 - DOORS LOAD LIMIT : 310 Kg. (683 lbs.)
- 4 - ACCESS FRAME P/N 13-52 02 26



DETAIL 2
(TWO HANDLES SUPPLIED)

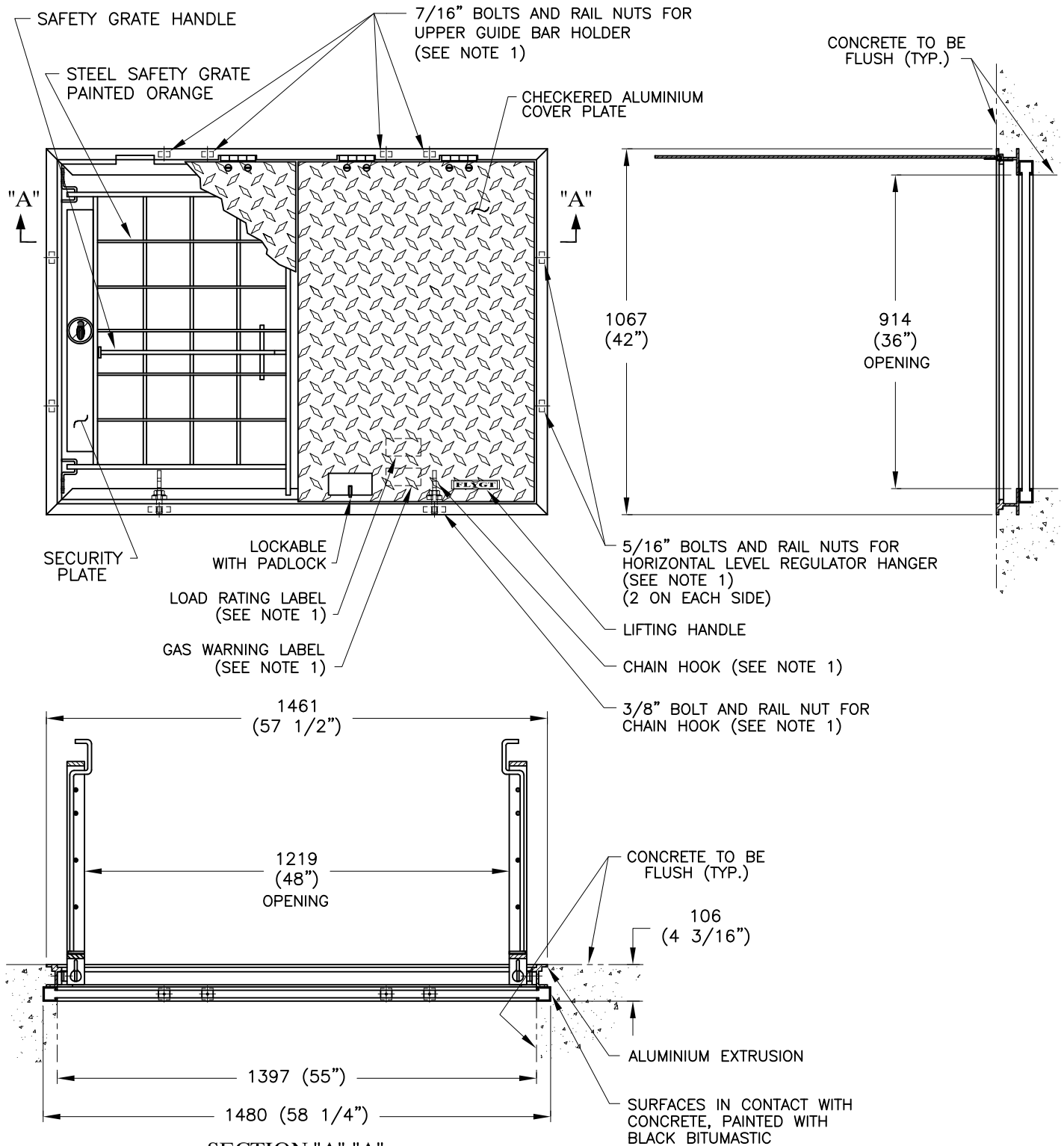
PART NO.: 388 15 11 FINISH: BLACK BITUMASTIC PAINT
13-51 02 97 FINISH: GALVANIZED STEEL



SECTION "A"- "A"
PART NO. 13-43 00 91

NOTES :

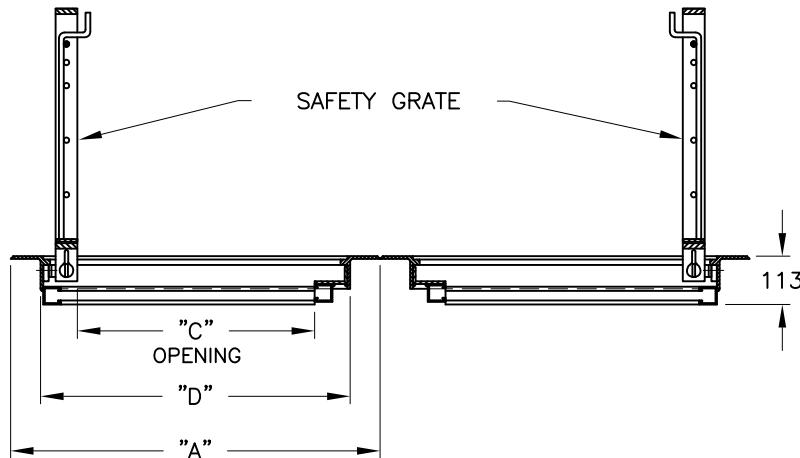
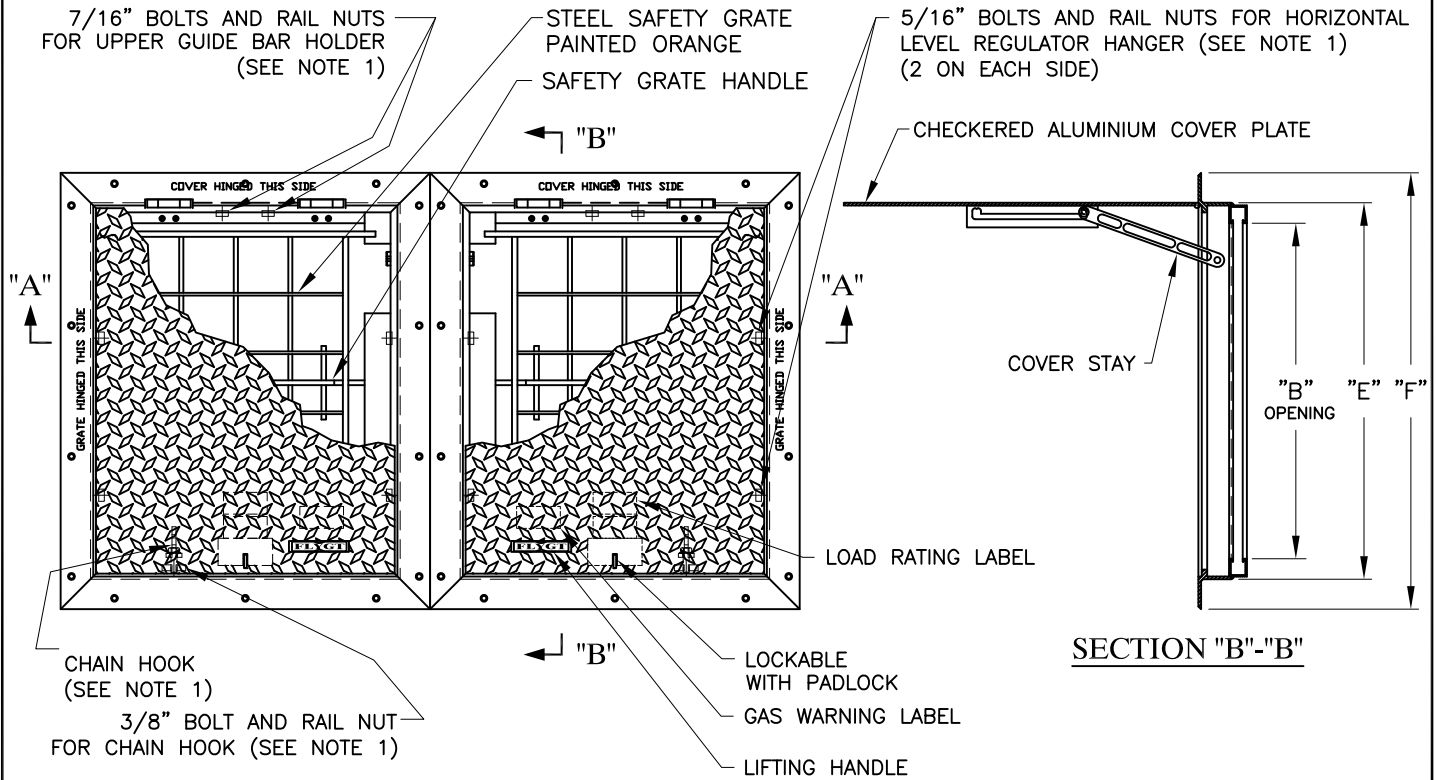
- 1 - INCLUDED WITH ACCESS FRAME.
- 2 - APPROX. WEIGHT 64 kg. (140 lb.)
- 3 - COVER LOAD LIMIT 14.36 kPa (300 lb/ft²)



SECTION "A"- "A"
PART NO. 13-43 00 90

NOTES :

- 1 - INCLUDED WITH ACCESS FRAME.
- 2 - APPROX. WEIGHT 64 kg. (140 lb.)
- 3 - COVER LOAD LIMIT 14.36 kPa (300 lb/ft²)



SECTION "A"- "A"

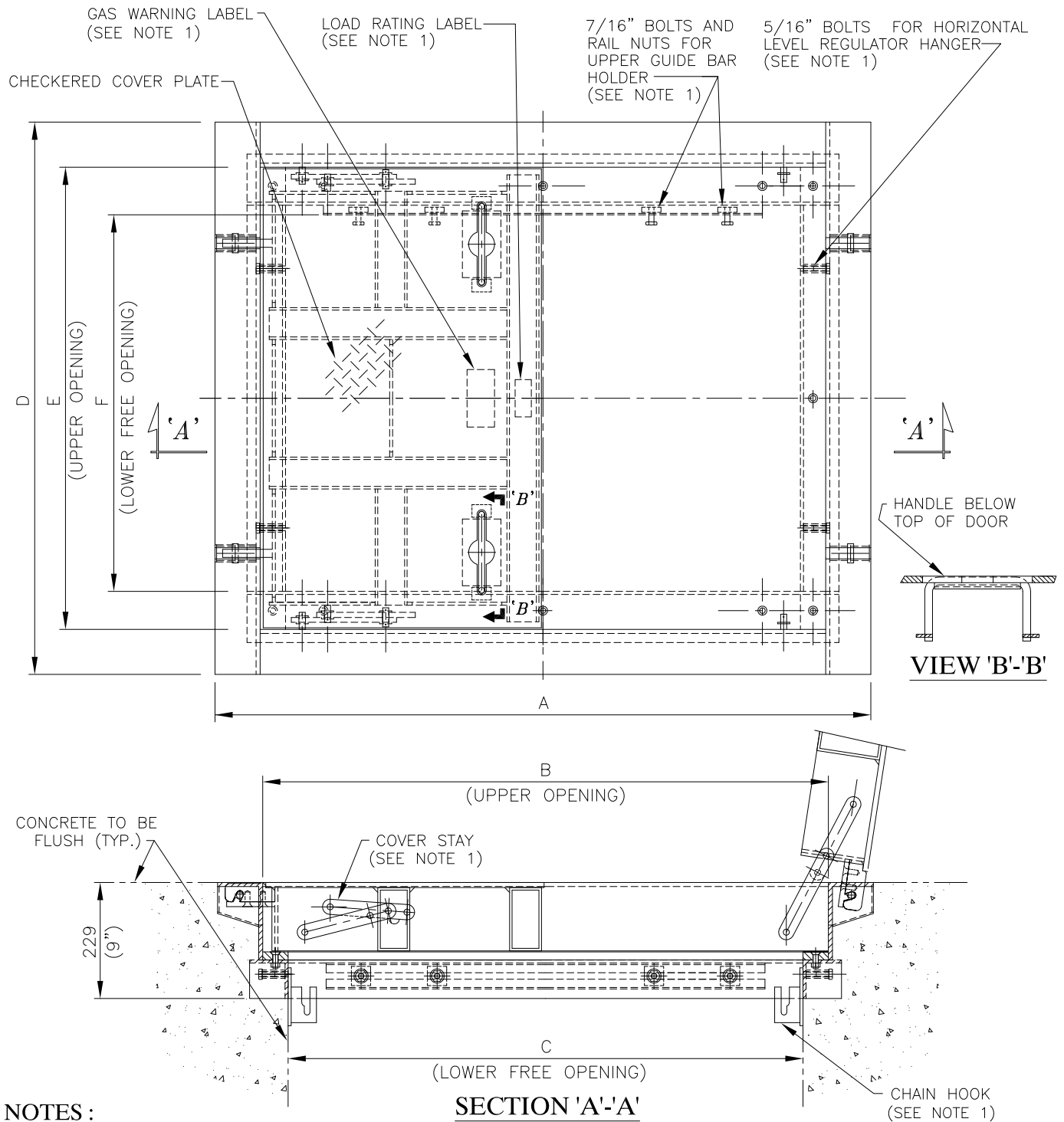
NOTES :

- 1 - INCLUDED WITH ACCESS FRAME.
- 2 - COVER LOAD LIMIT : 14.36 kPa (300 lb/ft²)

ON CHART PAGE ES 12.1.0, SELECT THE 'SAFE-HATCH' BASE ON THE PUMP, THEN WITH THE OPENING DIMENSION SIZE "B" & "C" SELECT COMPANION 'SAFE-HATCH' SAME SIZE

EX.: FOR A PUMP 3102HT 3"
HATCH SELECTION IS 13-43 00 40/80
ON PAGES ES 12.2.5 & ES 12.2.6
USE OPENING DIMENSIONS "B" & "C" AND MATCH COMPANION 'SAFE-HATCH' THE SAME DIMENSION.

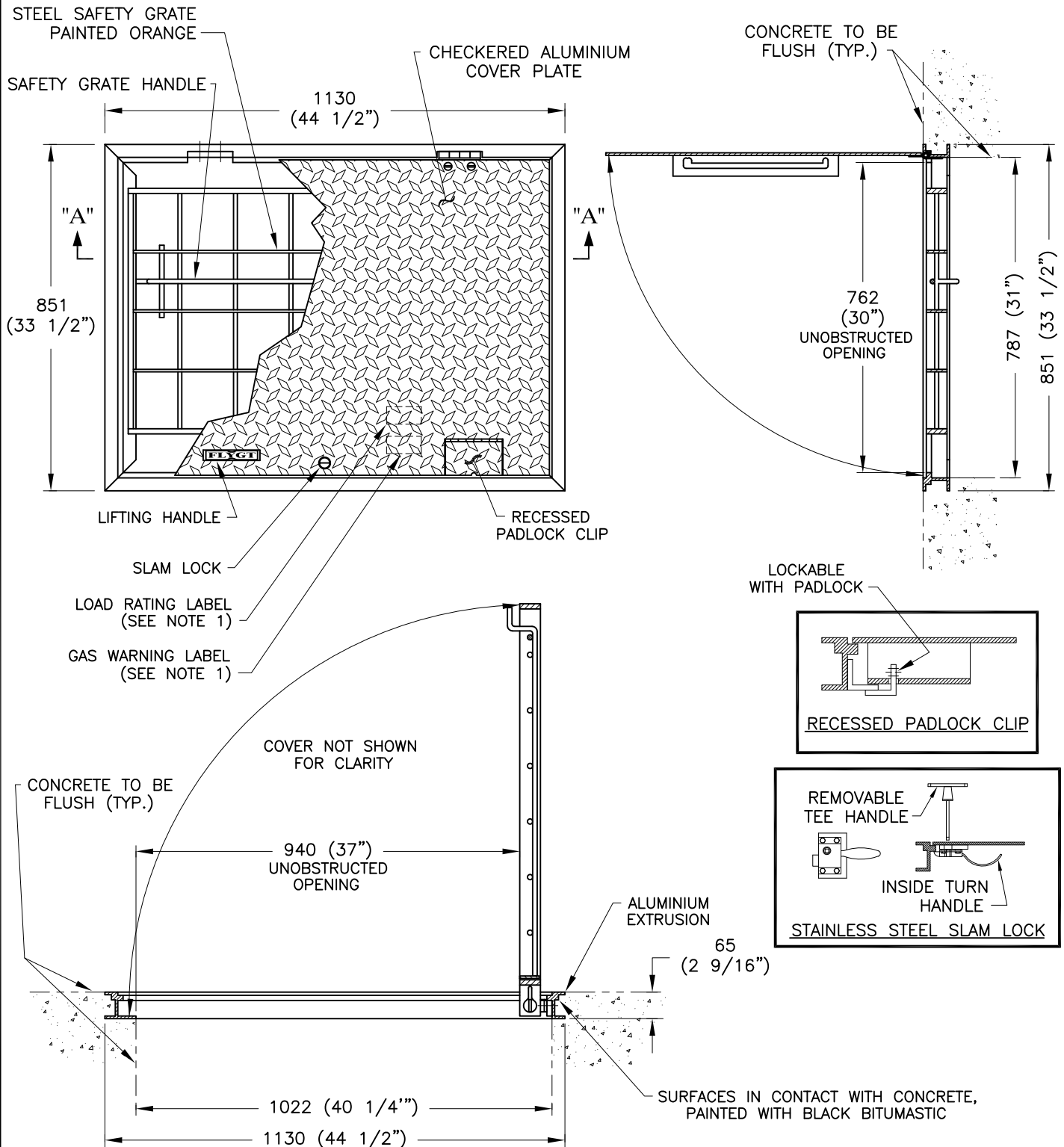
LEFT SIDE P/N	RIGHT SIDE P/N	"A"	"B"	"C"	"D"	"E"	"F"	APPROX. WEIGHT
13-43 03 10	13-43 03 00	860	781	552	721	876	1016	39 kg. (86 lb.)
13-43 03 11	13-43 03 01	943	813	635	803	908	1048	43 kg. (95 lb.)
13-43 03 12	13-43 03 02	1187	813	879	1048	908	1048	52 kg. (115 lb.)
13-43 03 13	13-43 03 03	1222	1321	914	1083	1416	1556	82 kg. (181 lb.)



NOTES :

- 1 - INCLUDED WITH ACCESS FRAME.
- 2 - DESIGNED AS PER THE NORM " DESIGN OF HIGHWAY BRIDGES " CSA NO. CAN3-S6-M78/MS 150.
- 3 - WEIGHT OF EACH DOOR : P/N 13-43 00 44 = 82 Kg. (180 lb.) APPROX.
P/N 13-43 00 45 = 168 Kg. (370 lb.) APPROX.
- 4 - FINISH : GALV. STEEL
- 5 - PISTONS TO HELP LIFT COVERS AVAILABLE ON REQUEST. INSTALLED BY THE MANUFACTURER.

ACCESS FRAME	"A"	"B"	"C"	"D"	"E"	"F"	APPROX. WEIGHT	COVER LOAD LIMIT
13-43 00 44	1294 (51")	1116 (44")	1016 (40")	1090 (43")	912 (36")	742 (29.75")	275 kg (606 lb)	6,120 kg (13,500 lb)
13-43 00 45	1650 (65")	1472 (58")	1372 (54")	1395 (55")	1217 (48")	1047 (41.75")	450 kg (1000 lb)	6,120 kg (13,500 lb)

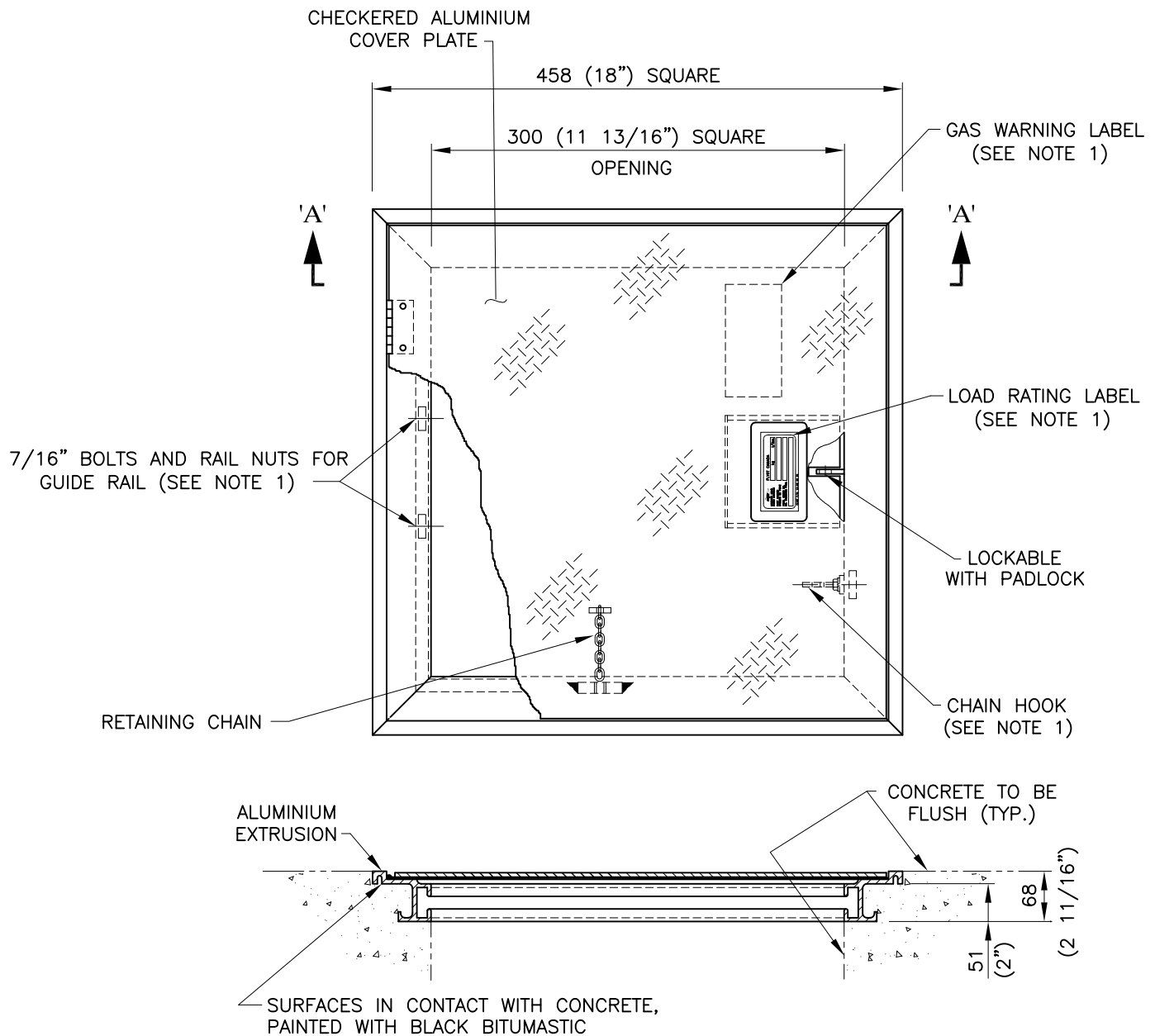


SECTION "A"- "A"

PART NO. 13-43 00 99

NOTES :

- 1 - INCLUDED WITH ACCESS FRAME.
- 2 - APPROX. WEIGHT ____ kg. (____ lb.)
- 3 - COVER LOAD LIMIT 14.36 kPa (300 lb/ft²)



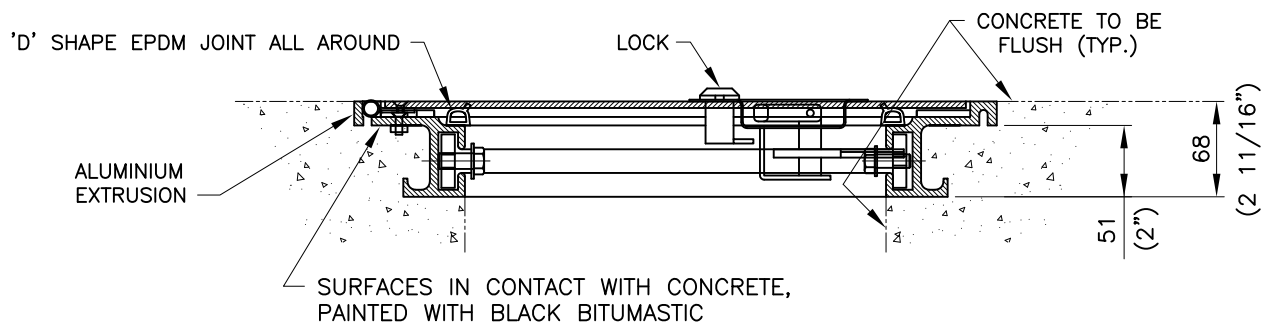
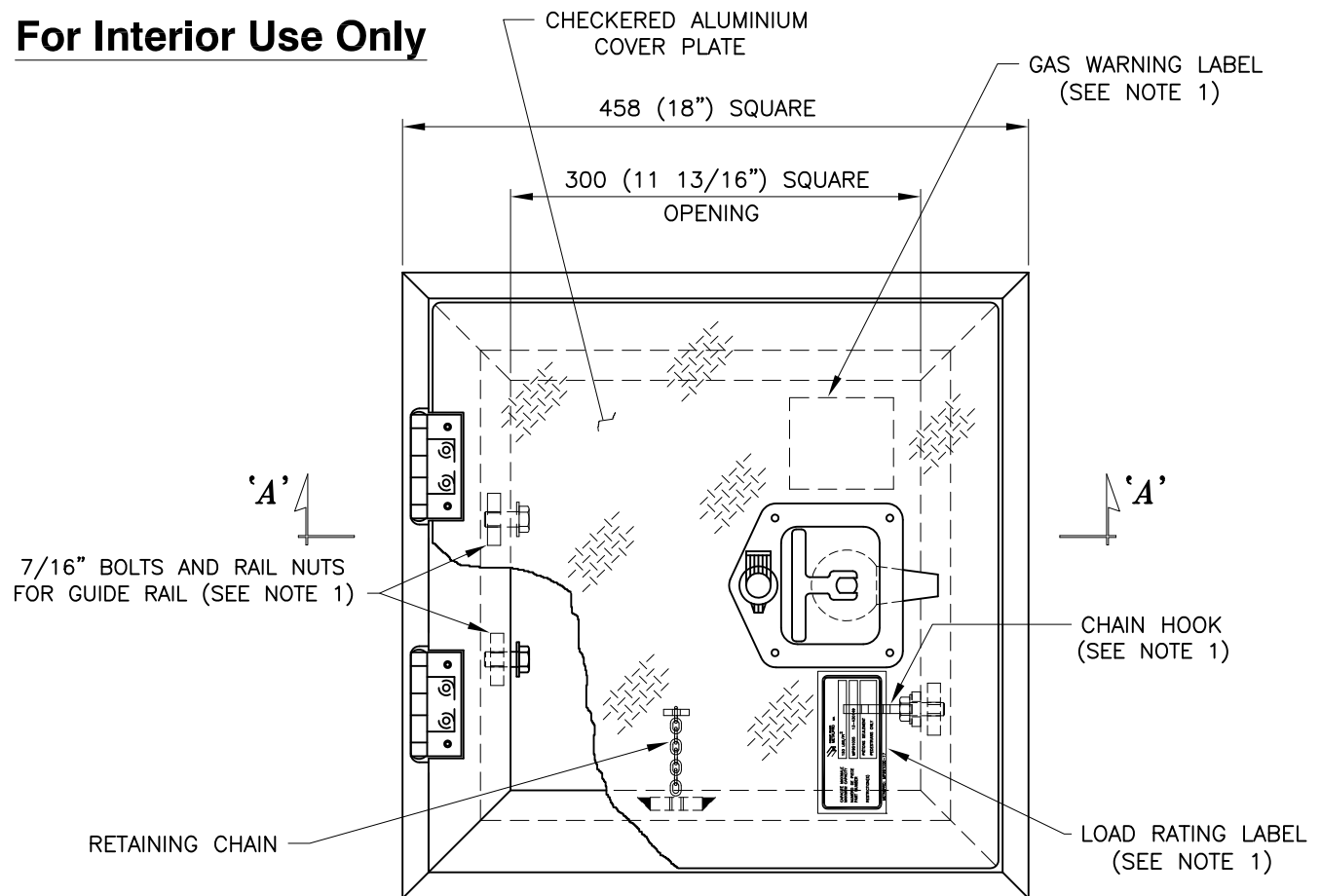
SECTION "A" - "A"

PART NO. 13-43 00 49

NOTES :

- 1 - INCLUDED WITH ACCESS FRAME.
- 2 - LOAD LIMIT : 730 kg/m² (150 lb/ft²)

For Interior Use Only

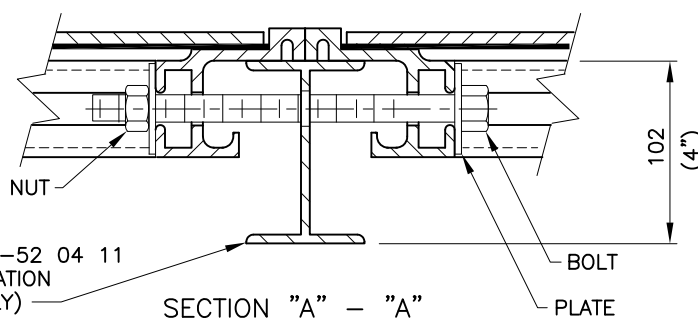
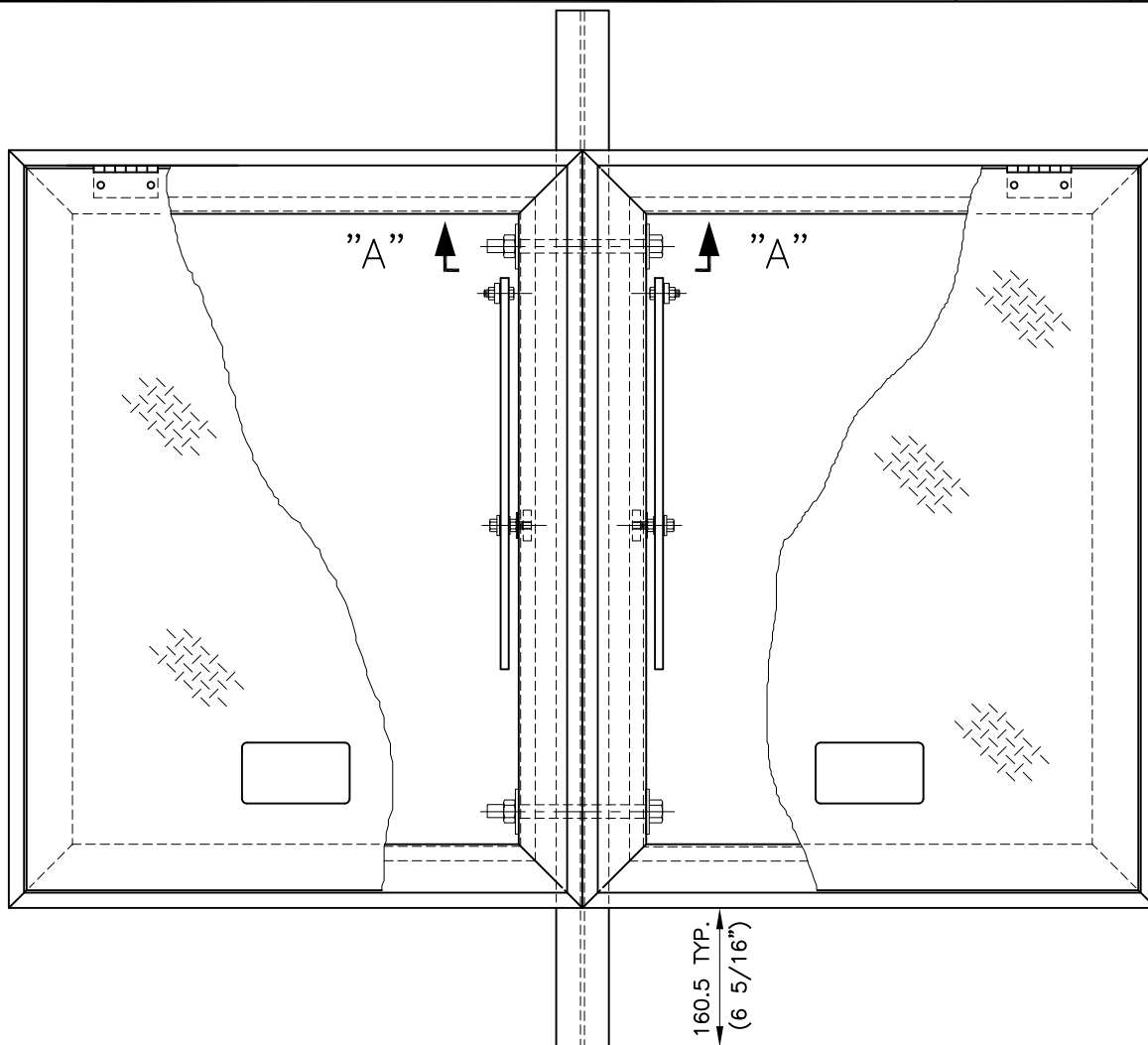


SECTION "A" - "A"

PART NO. 13-43 01 49

NOTES :

- 1 - INCLUDED WITH ACCESS FRAME.
- 2 - LOAD LIMIT : 730 kg/m² (150 lb/ft²)
- 3 - THE FRAME IS TESTED AND TIGHT AT AN INTERNAL PRESSURE OF 0.5 lb.



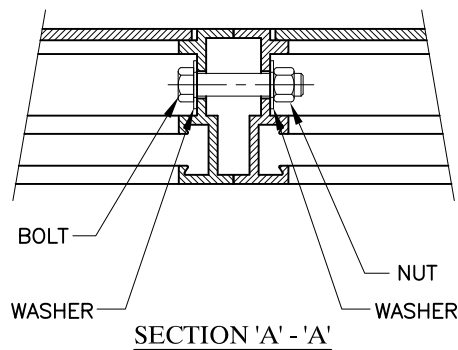
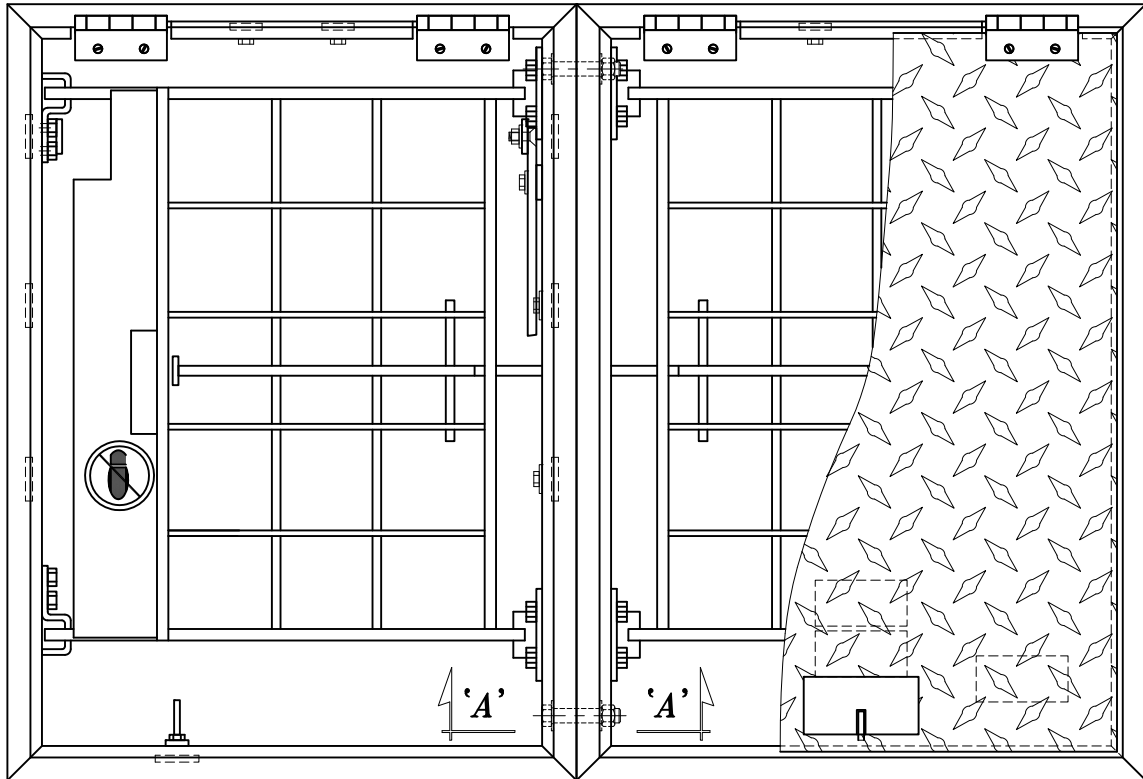
REINFORCING BEAM P/N 13-52 04 11
(USE WITH DUPLEX INSTALLATION
OF P/N 13-43 00 43 ONLY)

SECTION "A" - "A"

ACCESS FRAME PART NO.	CONNECTING ROD PART NO.	LOAD LIMIT
13-43 00 40	13-52 04 10	730 kg/m ² (150 lb/ft ²)
13-43 00 41	13-52 04 10	730 kg/m ² (150 lb/ft ²)
13-43 00 42	13-52 04 10	730 kg/m ² (150 lb/ft ²)
13-43 00 43	13-52 04 10	1100 kg (2420 lb) TOTAL

NOTE :

- 1 - P/N 13-52 04 10 INCLUDES 2 CONNECTING
ROD ASSEMBLIES AS SHOWN.

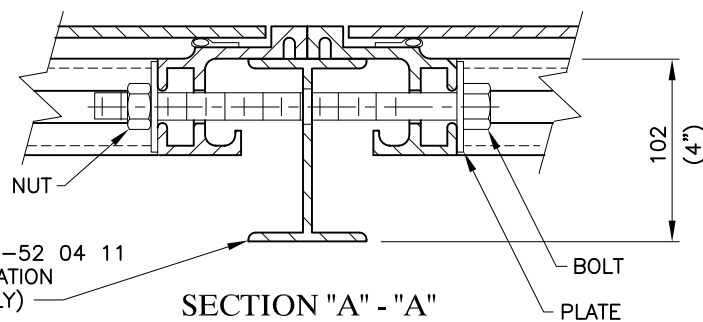
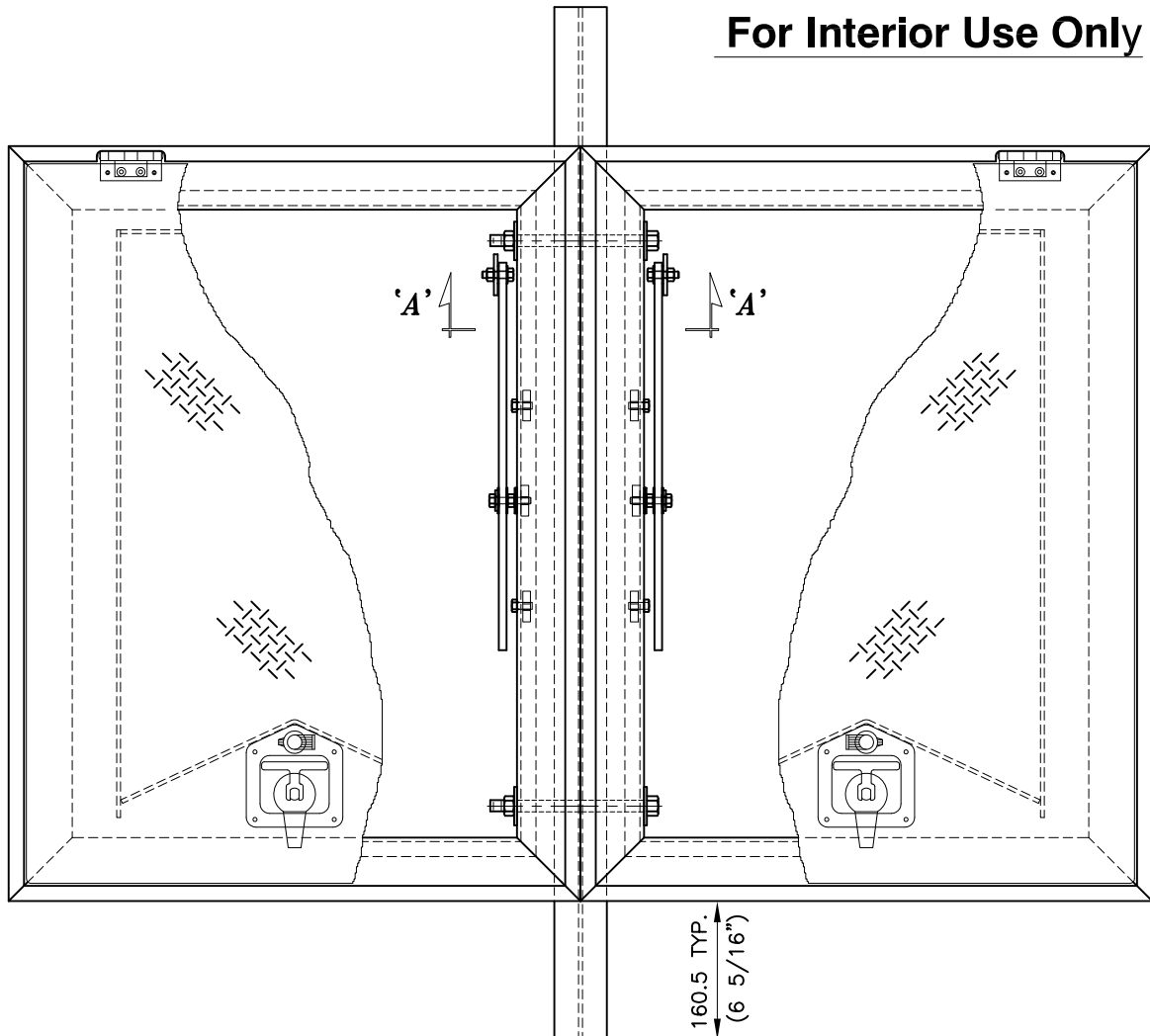


ACCESS FRAME PART NO.	CONNECTING ROD PART NO.	LOAD LIMIT
13-43 00 80	13-52 04 20	14.36 kPa (300 lb/ft ²)
13-43 00 81	13-52 04 20	14.36 kPa (300 lb/ft ²)
13-43 00 82	13-52 04 20	14.36 kPa (300 lb/ft ²)
13-43 00 83	13-52 04 20	14.36 kPa (300 lb/ft ²)

NOTE :

- 1 - P/N 13-52 04 20 INCLUDES 2 CONNECTING ROD ASSEMBLIES AS SHOWN.
- 3 - THE SAFETY GRATE MAY BE TURNED 180 DEGREES ON SITE.
(REQUIRES MOVING COVER STAY)

For Interior Use Only



REINFORCING BEAM P/N 13-52 04 11
(USE WITH DUPLEX INSTALLATION
OF P/N 13-43 01 43 ONLY)

SECTION "A" - "A"

ACCESS FRAME PART NO.	CONNECTING ROD PART NO.	LOAD LIMIT
13-43 01 40	13-52 04 10	730 kg/m ² (150 lb/ft ²)
13-43 01 41	13-52 04 10	730 kg/m ² (150 lb/ft ²)
13-43 01 42	13-52 04 10	730 kg/m ² (150 lb/ft ²)
13-43 01 43	13-52 04 10	1100 kg (2420 lb) TOTAL

NOTE :

1 - P/N 13-52 04 10 INCLUDES 2 CONNECTING ROD ASSEMBLIES AS SHOWN.

INTERIOR USE ONLY

KIT P/N	EXISTING ACCESS FRAME P/N
13-43 01 50	13-43 00 40
13-43 01 51	13-43 00 41
13-43 01 52	13-43 00 42
13-43 01 53	13-43 00 43

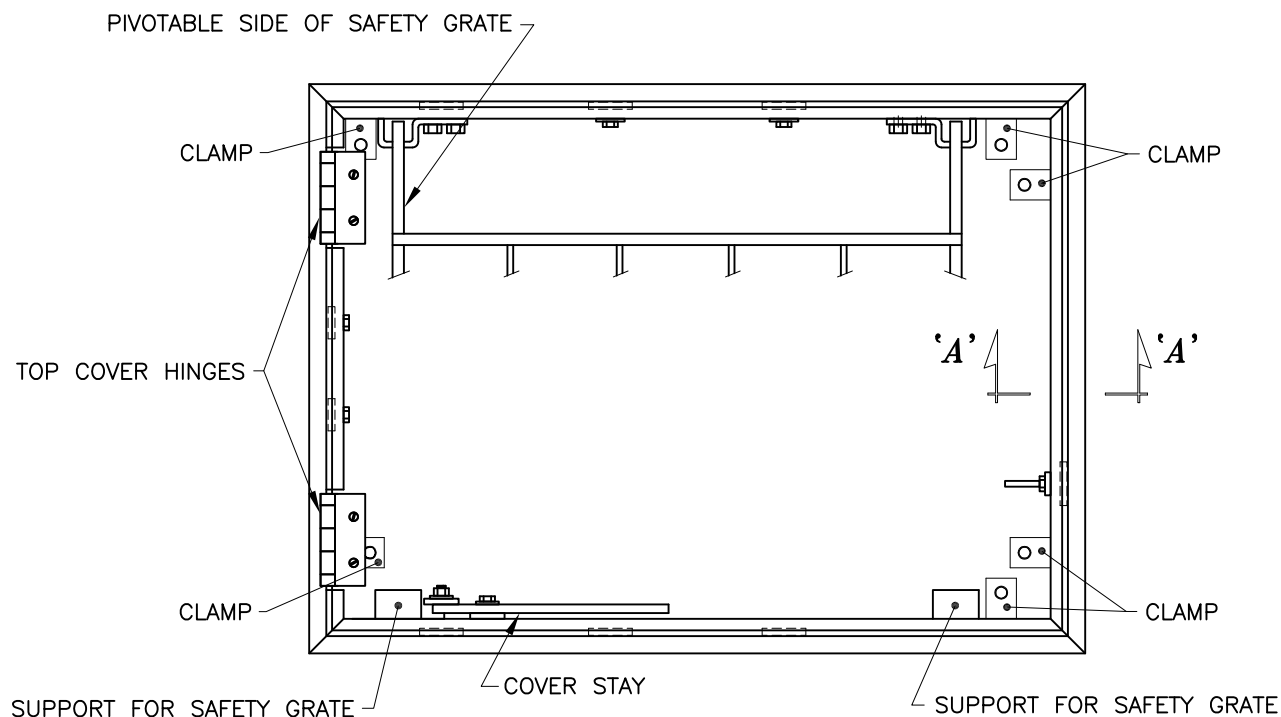
KIT COMPRISED OF :

- EASY STEPS TO FOLLOW
- ITEMS INCLUDED
 - TEMPLATE FOR DRILLING AND MARKING THE HAND-HOLE
 - HANDLE
 - PLATE TO COVER THE HAND-HOLE FOR THE HANDLE
 - STAINLESS STEEL 304 FASTENERS
 - DRILL BITS
 - LOCKING KEY

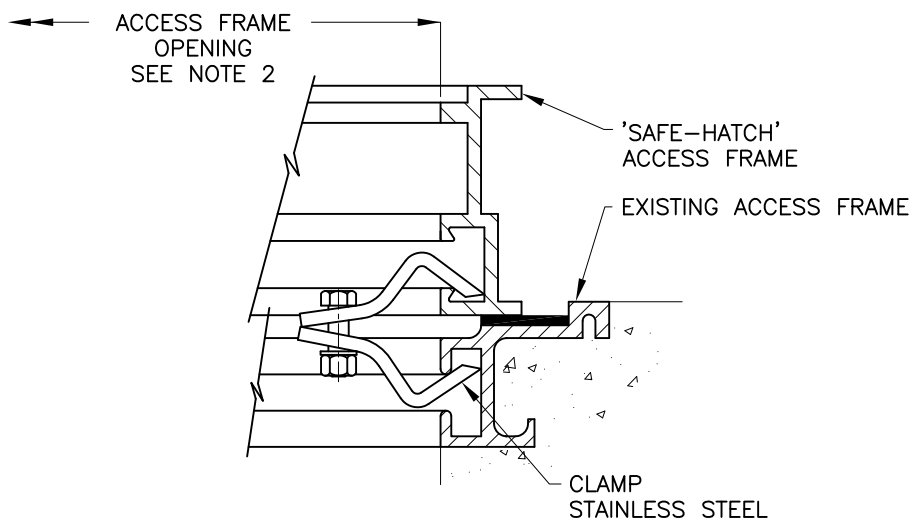
NOT INCLUDED :

- ANGLE GRINDER
- 1/2" DRILL
- JIGSAW WITH A BLADE FOR ALUMINUM

1 HOUR OF LABOR REQUIRED TO COMPLETE INSTALLATION.
PLUS 1 HOUR TO WAIT BEFORE CLOSING THE DOOR TO ALLOW FOR DRYING.



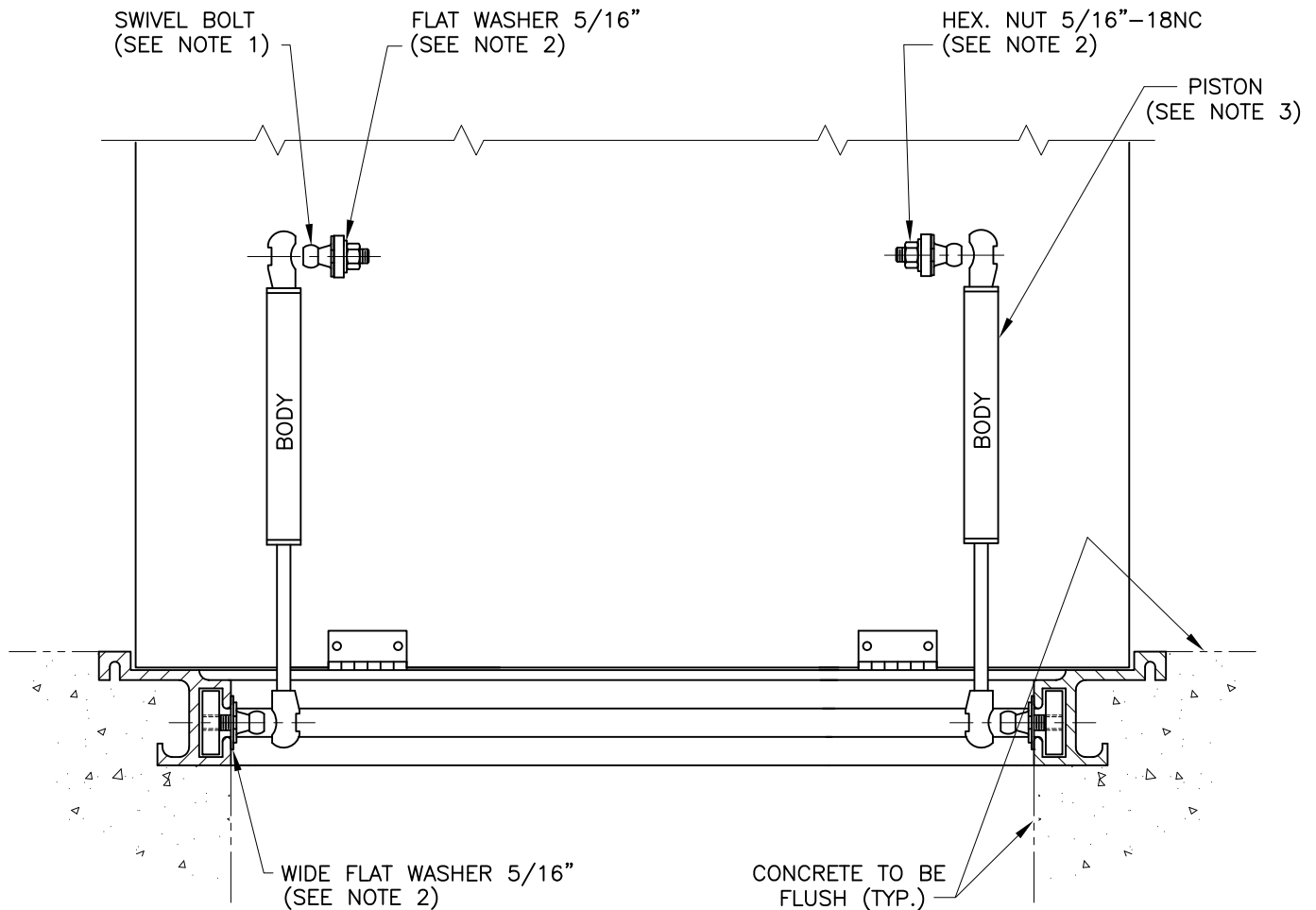
'SAFE-HATCH' ACCESS FRAME	REGULAR ALUMINIUM ACCESS FRAME	REGULAR ALUMINIUM ACCESS FRAME (OLD)	ODOUR RESISTANT ACCESS FRAME	CLAMP (SET OF 6)
13-43 00 80	13-43 00 40	13-52 04 01	13-43 01 40	13-52 04 21
13-43 00 81	13-43 00 41	13-52 04 02	13-43 01 41	13-52 04 21
13-43 00 82	13-43 00 42	13-52 04 04	13-43 01 42	13-52 04 21
13-43 00 83	13-43 00 43	13-52 04 03	13-43 01 43	13-52 04 21



SECTION "A"- "A"

NOTES :

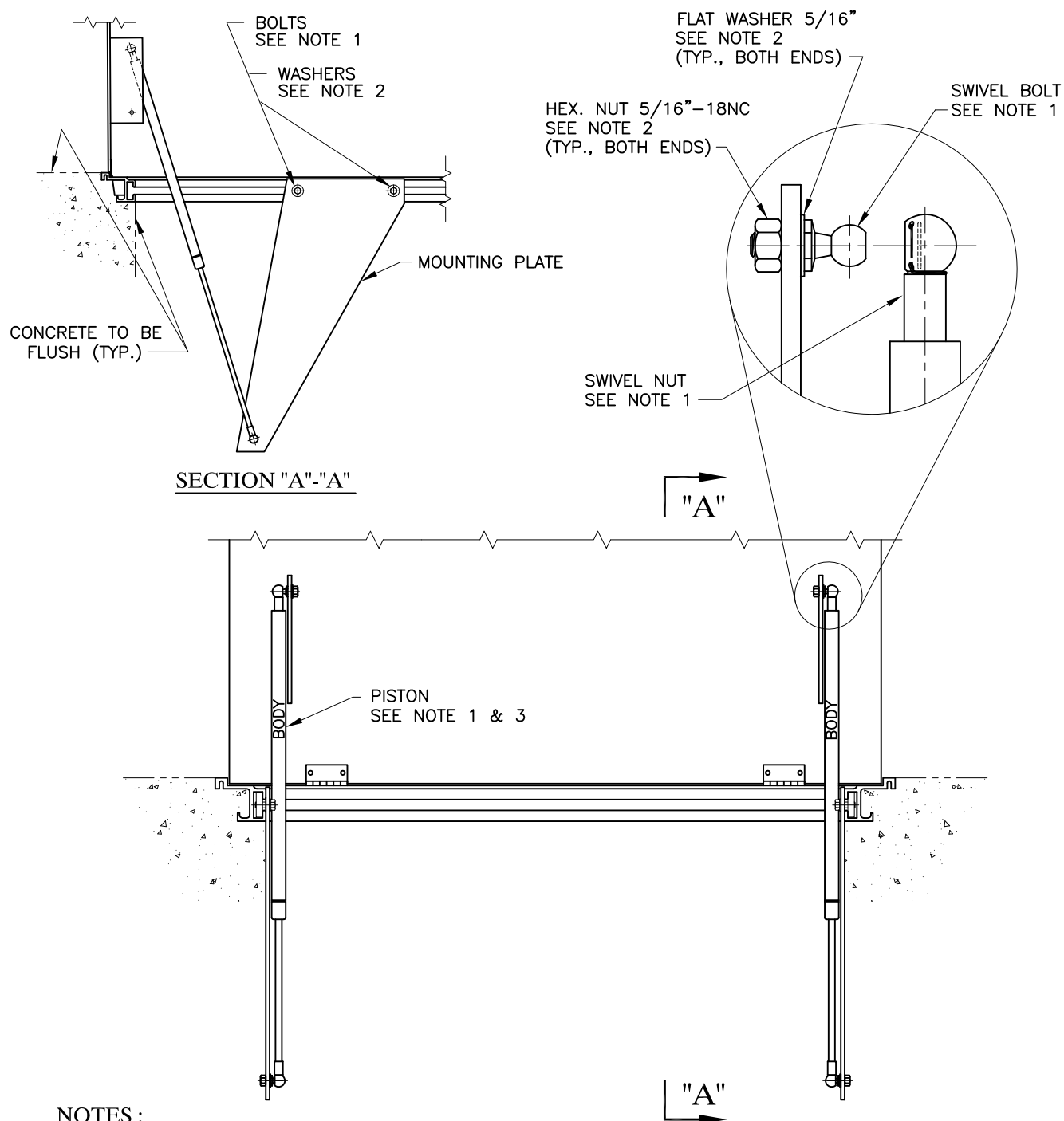
- 1 - ALL ACCESSORIES ON THE EXISTING FRAME (COVER, HINGES, LOCKING TAB, CHAIN HOOK, COVER STAY, ETC.) MUST BE REMOVED PRIOR TO INSTALLATION.
- 2 - BOTH ACCESS FRAME OPENINGS MUST BE LINED UP BEFORE CLAMPING THEM TOGETHER.
- 3 - CLAMP LOCATIONS SHOWN ARE APPROXIMATE.



NOTES :

- 1 - PISTON KIT P/N 13-70 02 50 INCLUDES:
2 PISTONS
4 SWIVEL BOLTS
1 MOUNTING INSTRUCTION SHEET
- 2 - EXISTING PARTS ON ACCESS FRAME.
- 3 - PISTONS MUST ALWAYS BE INSTALLED WITH THE BODY ON THE COVER SIDE.

FOR ACCESS FRAME P/N 13-43 00 40/41/42



NOTES :

- 1 - PISTON KIT P/N 13-70 02 51 INCLUDES:
 - 2 PISTONS
 - 4 SWIVEL NUTS
 - 4 SWIVEL BOLTS
 - 2 MOUNTING PLATES
 - 4 HEX. HD. BOLTS
 - 1 MOUNTING INSTRUCTION SHEET
- 2 - EXISTING PARTS ON ACCESS FRAME.
- 3 - PISTONS MUST ALWAYS BE INSTALLED WITH THE BODY ON THE COVER SIDE.

FOR ACCESS FRAME P/N 13-43 00 43